

ONSITE CHECKPOINT WITH CRW-SYSTEM

(CHECKPOINT RAM WARNING)

“KEEPING GATES AND ENTRANCES SAFE”



Onsite Checkpoint –product line is available from small concealed SCS radar-alarm modules to 2 digit speed displays, dollies and trailers with two 30 or 60 cm high digits and optional Variable Message Sign (VMS). System has built in radar and power source and optional rechargeable batteries or solar panels. Automatic brightness adjustment adjusts LED brightness to fit in all lighting conditions and increases operating time when powered with battery or solar panel system.

Speed displays will show speed to approaching target and flashes the speed if pre-set speed limit is exceeded. Speed limit, minimum and maximum speeds can be programmed to display by using control panel and LCD-screen.

CONTROL CENTRE INTERFACE (CCI) & CRW FOR AUDIO-VISUAL WARNINGS

OnSite Checkpoint systems are equipped with Control Centre Interface (CCI) and Checkpoint Ram Warning system (CRW) for additional gate & checkpoint security. CCI / CRW -system uses radar information independently from speed display. If separately programmed speed limit or sudden acceleration towards checkpoint or gate is detected, system will provide audio-visual warning at the site, control room or in both locations. Cut-off or any other normal speed display settings do not affect to CRW-operation as it works all the time between 0-240 KPH speed range independently from speed display.

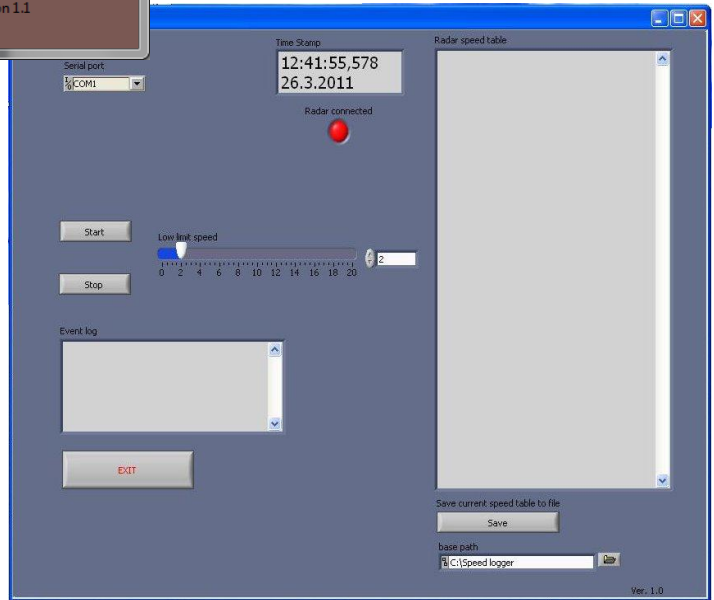
System can be connected to any general warning system inside the premises as well. This provides valuable seconds as an early warning not only to checkpoint & gate personnel, but people inside the premises as well.

ADVANCED CONTROL CENTRE INTERFACE & CRW FOR CENTRALIZED MULTISYSTEM CONTROL

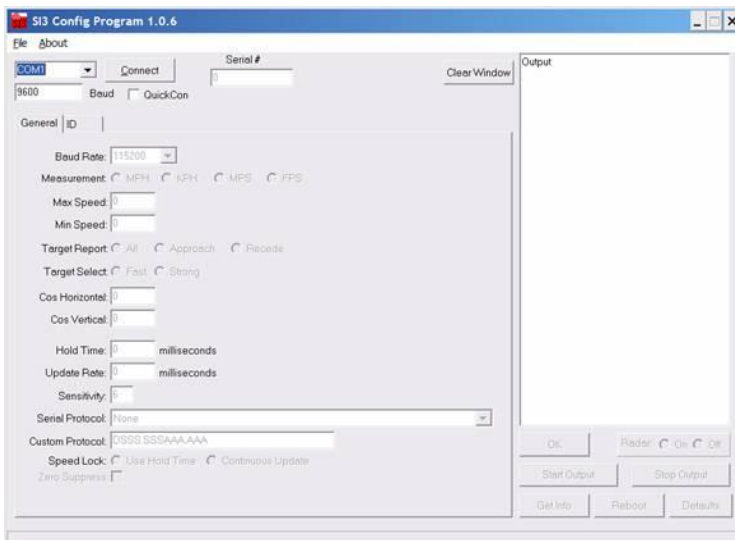
Advanced version from CCI (ACCI) allows centralized controlling & alarms from multiple SCS or speed display systems. With multiple systems it is possible to cover multiple lanes, different locations or wider area in general.



Speed Server for multiple systems (ACCI / CRW)



CCI & CRW



Radar Settings Interface (ACCI)

TECHNICAL SPECIFICATIONS

RADAR:	
Frequency:	K-band 24.150 GHz +/- 50 MHz
Beam width:	12° +/-1°
Range:	920 m
Speed range:	1 - 240 km/h
Accuracy	±1,25 %
Cosine angle error correction:	Cosine angle correction up to 45 degrees vertical & horizontal
Programmable functions (ACCI)	- KPH, MPH or KNOTS - Sensitivity / range - Vertical & horizontal angle - Directionality (approaching, resending or both directions) - Target lock & hold times - Minimum & maximum speeds - Closest or fastest target in range

DATA COLLECTION & CONTROLL MODULE	
Functions:	Control for two digits
Data collection, internal (Option):	SD-Card up to millions of samples
Data collection, computer (Option):	PC-software (ACCI)
Accuracy:	Speed is stored in full kilometres, miles or knots
Directionality	Both directions, only approaching or targets going away. (System will relay only approaching targets to CRW & display)
Options:	Automated data transfer over GSM-data connection (option) Automated date and time update over GSM network (option)

POWER	
Nominal power:	220-240V / 12V
Power consumption (minimum)	0,23 A (2,8 W)
Power consumption (maximum):	11,83 A (142 W) (OnSite 60 without VMS)

ONSITE CONTROLL FUNCTIONS	
LCD-display with back light and 5 controls	Possibility to set following functions with menu & control buttons: <ul style="list-style-type: none">- Speed limit (when exceeded module will flash speed digits)- Maximum speed show by display- Minimum speed show by display- Speed information shown in seconds- Date and time- GSM number for data transfer (GSM/GPRS -data transfer option)- Number of samples collected before initiation of an automatic data transfer (GSM/GPRS -data transfer option)